



# 1

**Ball Valves**



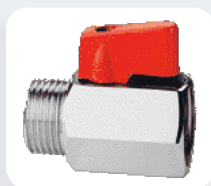


## MINI BALL VALVES, BRASS

TYPE: 125 SERIES

Part.no.	Pressure	Connection	Description
MBV1PB	15 BAR	1/8" BSP	ISO 228, Standard bore
MBV2PB	15 BAR	1/4" BSP	ISO 228, Standard bore
MBV3PB	15 BAR	3/8" BSP	ISO 228, Standard bore
MBV4PB	15 BAR	1/2" BSP	ISO 228, Standard bore
MBV6PB	15 BAR	3/4" BSP	ISO 228, Standard bore

OPTION: Screw driver adjustment (For skruejern)



## MINI BALL VALVES, BRASS

TYPE: 126 SERIES

Part.no.	Pressure	Connection	Description
MBV1PB-MF	15 BAR	1/8" BSP	ISO 228, Male x Fem, Standard bore
MBV2PB-MF	15 BAR	1/4" BSP	ISO 228, Male x Fem, Standard bore
MBV3PB-MF	15 BAR	3/8" BSP	ISO 228, Male x Fem, Standard bore
MBV4PB-MF	15 BAR	1/2" BSP	ISO 228, Male x Fem, Standard bore
MBV6PB-MF	15 BAR	3/4" BSP	ISO 228, Male x Fem, Standard bore

OPTION: Screw driver adjustment (For skruejern) ISO 228, Male x Fem, Standard bore



## BALL VALVES, BRASS

Type: 090 SERIES, Full Bore

Part.no.	Pressure	Connection	Description
B100A-005	30 BAR	1/8" BSPP	Female x Female, ISO 228, Full bore
B100A-008	50 BAR	1/4" BSPP	Female x Female, ISO 228, Full bore
B100A-010	50 BAR	3/8" BSPP	Female x Female, ISO 228, Full bore
B100A-015	50 BAR	1/2" BSPP	Female x Female, ISO 228, Full bore
B100A-020	40 BAR	3/4" BSPP	Female x Female, ISO 228, Full bore
B100A-025	40 BAR	1" BSPP	Female x Female, ISO 228, Full bore
B100A-032	30 BAR	1-1/4" BSPP	Female x Female, ISO 228, Full bore
B100A-040	30 BAR	1-1/2" BSPP	Female x Female, ISO 228, Full bore
B100A-050	25 BAR	2" BSPP	Female x Female, ISO 228, Full bore
B100A-065	18 BAR	2-1/2" BSPP	Female x Female, ISO 228, Full bore
B100A-080	16 BAR	3" BSPP	Female x Female, ISO 228, Full bore
B100A-100	14 BAR	4" BSPP	Female x Female, ISO 228, Full bore



## BALL VALVES, BRASS

TYPE: 076 SERIES, Full Bore

Part.no.	Pressure	Connection	Description
B100B-008	50 BAR	1/4" BSPP	Fem x Fem, ISO 7/1 Rp, Full bore
B100B-010	50 BAR	3/8" BSPP	Fem x Fem, ISO 7/1 Rp, Full bore
B100B-015	50 BAR	1/2" BSPP	Fem x Fem, ISO 7/1 Rp, Full bore
B100B-020	40 BAR	3/4" BSPP	Fem x Fem, ISO 7/1 Rp, Full bore
B100B-025	40 BAR	1" BSPP	Fem x Fem, ISO 7/1 Rp, Full bore
B100B-032	30 BAR	1-1/4" BSPP	Fem x Fem, ISO 7/1 Rp, Full bore
B100B-040	30 BAR	1-1/2" BSPP	Fem x Fem, ISO 7/1 Rp, Full bore
B100B-050	25 BAR	2" BSPP	Fem x Fem, ISO 7/1 Rp, Full bore

**BALL VALVES, BRASS**

TYPE: 077 SERIES, Full Bore

Part.no.	Pressure	Connection	Description
B100B-008-MF	50 BAR	1/4" BSPP	Male x Fem, ISO 7/1 Rp, Full bore
B100B-010-MF	50 BAR	3/8" BSPP	Male x Fem, ISO 7/1 Rp, Full bore
B100B-015-MF	50 BAR	1/2" BSPP	Male x Fem, ISO 7/1 Rp, Full bore
B100B-020-MF	40 BAR	3/4" BSPP	Male x Fem, ISO 7/1 Rp, Full bore
B100B-025-MF	40 BAR	1" BSPP	Male x Fem, ISO 7/1 Rp, Full bore
B100B-032-MF	30 BAR	1-1/4" BSPP	Male x Fem, ISO 7/1 Rp, Full bore
B100B-040-MF	30 BAR	1-1/2" BSPP	Male x Fem, ISO 7/1 Rp, Full bore
B100B-050-MF	25 BAR	2" BSPP	Male x Fem, ISO 7/1 Rp, Full bore

OPTION: Male x Male

**BALL VALVES, BRASS**

TYPE: 078 SERIES, Full bore, T-Handle

Part.no.	Pressure	Connection	Description
B100B-008-T	50 BAR	1/4" BSPP	Fem x Fem, ISO 7/1 Rp, Full bore
B100B-010-T	50 BAR	3/8" BSPP	Fem x Fem, ISO 7/1 Rp, Full bore
B100B-015-T	50 BAR	1/2" BSPP	Fem x Fem, ISO 7/1 Rp, Full bore
B100B-020-T	40 BAR	3/4" BSPP	Fem x Fem, ISO 7/1 Rp, Full bore
B100B-025-T	40 BAR	1" BSPP	Fem x Fem, ISO 7/1 Rp, Full bore

**BALL VALVES, BRASS**

TYPE: 090 / 111 SERIES

Part.no.	Pressure	Connection	Description
N100A-008	50 BAR	1/4" NPT	Female x Female, Full bore
N100A-010	50 BAR	3/8" NPT	Female x Female, Full bore
N100A-015	50 BAR	1/2" NPT	Female x Female, Full bore
N100A-020	40 BAR	3/4" NPT	Female x Female, Full bore
N100A-025	40 BAR	1" NPT	Female x Female, Full bore
N100A-032	30 BAR	1-1/4" NPT	Female x Female, Full bore
N100A-040	30 BAR	1-1/2" NPT	Female x Female, Full bore
N100A-050	25 BAR	2" NPT	Female x Female, Full bore
N100A-065	18 BAR	2-1/2" NPT	Female x Female, Red bore
N100A-080	14 BAR	3" NPT	Female x Female, Red bore
N100A-100	12 BAR	4" NPT	Female x Female, Red bore



## BALL VALVE, BRASS, FOR DRINKING WATER

TYPE: 376 SERIES, Approved EN 13828

Part.no.	Pressure	Connection	Description
B100G-008	50 BAR	1/4" BSPP	Fem x Fem, ISO 7/1 Rp, Full bore
B100G-010	50 BAR	3/8" BSPP	Fem x Fem, ISO 7/1 Rp, Full bore
B100G-015	50 BAR	1/2" BSPP	Fem x Fem, ISO 7/1 Rp, Full bore
B100G-020	40 BAR	3/4" BSPP	Fem x Fem, ISO 7/1 Rp, Full bore
B100G-025	40 BAR	1" BSPP	Fem x Fem, ISO 7/1 Rp, Full bore
B100G-032	30 BAR	1-1/4" BSPP	Fem x Fem, ISO 7/1 Rp, Full bore
B100G-040	30 BAR	1-1/2" BSPP	Fem x Fem, ISO 7/1 Rp, Full bore
B100G-050	25 BAR	2" BSPP	Fem x Fem, ISO 7/1 Rp, Full bore

Option: Male x Female and T-Handle



## BALL VALVE, BRASS, FOR GAS

TYPE: 066 series, EN 331 Approved

Part.no.	Pressure	Connection	Description
B100Y-008	5 BAR	1/4" BSPP	Fem x Fem, ISO 7/1 Rp, Full bore
B100Y-010	5 BAR	3/8" BSPP	Fem x Fem, ISO 7/1 Rp, Full bore
B100Y-015	5 BAR	1/2" BSPP	Fem x Fem, ISO 7/1 Rp, Full bore
B100Y-020	5 BAR	3/4" BSPP	Fem x Fem, ISO 7/1 Rp, Full bore
B100Y-025	5 BAR	1" BSPP	Fem x Fem, ISO 7/1 Rp, Full bore
B100Y-032	5 BAR	1-1/4" BSPP	Fem x Fem, ISO 7/1 Rp, Full bore
B100Y-040	5 BAR	1-1/2" BSPP	Fem x Fem, ISO 7/1 Rp, Full bore
B100Y-050	5 BAR	2" BSPP	Fem x Fem, ISO 7/1 Rp, Full bore

Option: Male x Female and T-Handle



## BALL VALVES WITH DRAIN, BRASS

TYPE: 115 SERIES

Part.no.	Pressure	Connection	Description
B115-015	25 BAR	1/2" BSP	ISO 228, Full bore
B115-020	25 BAR	3/4" BSP	ISO 228, Full bore
B115-025	25 BAR	1" BSP	ISO 228, Full bore
B115-032	20 BAR	1-1/4" BSP	ISO 228, Full bore
B115-040	20 BAR	1-1/2" BSP	ISO 228, Full bore
B115-050	20 BAR	2" BSP	ISO 228, Full bore



## BALL VALVES, BRASS

TYPE: 132 SERIES, WITH HOSE BIBCOCK

Part.no.	Pressure	Connection	Description
FAT-3PB	15 BAR	3/8" BSP	ISO 228
FAT-4PB	15 BAR	1/2" BSP	ISO 228
FAT-6PB	15 BAR	3/4" BSP	ISO 228
FAT-8PB	12 BAR	1" BSP	ISO 228

**BALL VALVES MINI**

TYPE: GEM - CARBON STEEL

Part. no	Pressure	Connection	Description
GEM-G2C	500 BAR	1/4" BSPP	Mini High Pressure, 6mm Bore
GEM-N2C	500 BAR	1/4" NPT	Mini High Pressure, 6mm Bore

**BALL VALVES STANDARD**

TYPE: GE2 - CARBON STEEL

Part. no	Pressure	Connection	Description
GE2-G1C	500 BAR	1/8" BSPP	Bore 4mm
GE2-G2C	500 BAR	1/4" BSPP	Bore 6mm
GE2-G3C	500 BAR	3/8" BSPP	Bore 10mm
GE2-G4C	500 BAR	1/2" BSPP	Bore 13mm
GE2-G6C	400 BAR	3/4" BSPP	Bore 20mm
GE2-G8C	350 BAR	1" BSPP	Bore 25mm
GE2-G10C	350 BAR	1-1/4" BSPP	Bore 25mm
GE2-G12C	350 BAR	1-1/2" BSPP	Bore 25mm
GE2-N1C	500 BAR	1/8" NPT	Bore 4mm
GE2-N2C	500 BAR	1/4" NPT	Bore 6mm
GE2-N3C	500 BAR	3/8" NPT	Bore 10mm
GE2-N4C	500 BAR	1/2" NPT	Bore 13mm
GE2-N6C	400 BAR	3/4" NPT	Bore 20mm
GE2-N8C	350 BAR	1" NPT	Bore 25mm
GE2-N10C	350 BAR	1-1/4" NPT	Bore 25mm
GE2-N12C	350 BAR	1-1/2" NPT	Bore 25mm

**BALL VALVES WITH MOUNTING HOLES**

TYPE: GE2-MH - CARBON STEEL

Part. no	Pressure	Connection	Description
GE2MH-G1C	500 BAR	1/8" BSPP	Bore 4mm
GE2MH-G2C	500 BAR	1/4" BSPP	Bore 6mm
GE2MH-G3C	500 BAR	3/8" BSPP	Bore 10mm
GE2MH-G4C	500 BAR	1/2" BSPP	Bore 13mm
GE2MH-G6C	400 BAR	3/4" BSPP	Bore 20mm
GE2MH-G8C	350 BAR	1" BSPP	Bore 25mm
GE2MH-G10C	350 BAR	1-1/4" BSPP	Bore 25mm
GE2MH-G12C	350 BAR	1-1/2" BSPP	Bore 25mm
GE2MH-N1C	500 BAR	1/8" NPT	Bore 4mm
GE2MH-N2C	500 BAR	1/4" NPT	Bore 6mm
GE2MH-N3C	500 BAR	3/8" NPT	Bore 10mm
GE2MH-N4C	500 BAR	1/2" NPT	Bore 13mm
GE2MH-N6C	400 BAR	3/4" NPT	Bore 20mm
GE2MH-N8C	350 BAR	1" NPT	Bore 25mm
GE2MH-N10C	350 BAR	1-1/4" NPT	Bore 25mm
GE2MH-N12C	350 BAR	1-1/2" NPT	Bore 25mm



## BALL VALVES WITH ISO TOP

TYPE: GE2FX - CARBON STEEL

Part. no	Pressure	Connection	Description
GE2FX-G1C	500 BAR	1/8" BSPP	ISO Top
GE2FX-G2C	500 BAR	1/4" BSPP	ISO Top
GE2FX-G3C	500 BAR	3/8" BSPP	ISO Top
GE2FX-G4C	500 BAR	1/2" BSPP	ISO Top
GE2FX-G6C	400 BAR	3/4" BSPP	ISO Top
GE2FX-G8C	350 BAR	1" BSPP	ISO Top
GE2FX-G10C	350 BAR	1-1/4" BSPP	ISO Top
GE2FX-G12C	350 BAR	1-1/2" BSPP	ISO Top
GE2FX-N1C	500 BAR	1/8" NPT	ISO Top
GE2FX-N2C	500 BAR	1/4" NPT	ISO Top
GE2FX-N3C	500 BAR	3/8" NPT	ISO Top
GE2FX-N4C	500 BAR	1/2" NPT	ISO Top
GE2FX-N6C	400 BAR	3/4" NPT	ISO Top
GE2FX-N8C	350 BAR	1" NPT	ISO Top
GE2FX-N10C	350 BAR	1-1/4" NPT	ISO Top
GE2FX-N12C	350 BAR	1-1/2" NPT	ISO Top



## BALL VALVES STANDARD

TYPE: GB2 - CARBON STEEL

Part. no	Pressure	Connection	Description
GB2-G10C	350 BAR	1-1/4" BSPP	Bore 32mm
GB2-G12C	350 BAR	1-1/2" BSPP	Bore 40mm
GB2-G16C	350 BAR	2" BSPP	Bore 50mm
GB2-N10C	350 BAR	1-1/4" NPT	Bore 32mm
GB2-N12C	350 BAR	1-1/2" NPT	Bore 40mm
GB2-N16C	350 BAR	2" NPT	Bore 50mm

**BALL VALVES DN2353**

TYPE: GE2 - MM - CARBON STEEL

Part. no	Pressure	Connection	Description
GE2-L6C	500 BAR	M12 x 1,5mm	Bore 6mm, For 6mm Tube
GE2-L8C	500 BAR	M14 x 1,5mm	Bore 6mm, For 8mm Tube
GE2-L10C	500 BAR	M16 x 1,5mm	Bore 10mm, For 10mm Tube
GE2-L12C	500 BAR	M18 x 1,5mm	Bore 10mm, For 12mm Tube
GE2-L15C	500 BAR	M22 x 1,5mm	Bore 13mm, For 15mm Tube
GE2-L18C	500 BAR	M26 x 1,5mm	Bore 13mm, For 18mm Tube
GE2-L22C	400 BAR	M30 x 2,0mm	Bore 20mm, For 22mm Tube
GE2-L28C	350 BAR	M36 x 2,0mm	Bore 25mm, For 28mm Tube
GE2-L35C	350 BAR	M45 x 2,0mm	Bore 25mm, For 35mm Tube
GE2-L42C	350 BAR	M52 x 2,0mm	Bore 25mm, For 42mm Tube
GE2-S8C	500 BAR	M16 x 1,5mm	Bore 4mm, For 8mm Tube
GE2-S10C	500 BAR	M18 x 1,5mm	Bore 6mm, For 10mm Tube
GE2-S12C	500 BAR	M20 x 1,5mm	Bore 10mm, For 12mm Tube
GE2-S14C	500 BAR	M22 x 1,5mm	Bore 10mm, For 14mm Tube
GE2-S16C	500 BAR	M24 x 1,5mm	Bore 13mm, For 16mm Tube
GE2-S20C	500 BAR	M30 x 2,0mm	Bore 13mm, For 16mm Tube
GE2-S25C	400 BAR	M36 x 2,0mm	Bore 20mm, For 25mm Tube
GE2-S30C	350 BAR	M42 x 2,0mm	Bore 25mm, For 30mm Tube
GE2-S38C	350 BAR	M52 x 2,0mm	Bore 25mm, For 38mm Tube

**BALL VALVES - PEKOS**

TYPE: K809 - 3 PIECE BALL VALVES - CARBON STEEL

Part. no	Pressure	Connection	Description
PK809SGSGV-G2C	140 BAR	1/4" BSP	3 Piece ball
PK809SGSGV-G4C	140 BAR	1/2" BSP	3 Piece ball
PK809SGSGV-G6C	140 BAR	3/4" BSP	3 Piece ball
PK809SGSGV-G8C	140 BAR	1" BSP	3 Piece ball
PK809SGSGV-G10C	140 BAR	1-1/4" BSP	3 Piece ball
PK809SGSGV-G12C	140 BAR	1-1/2" BSP	3 Piece ball
PK809SGSGV-G16C	100 BAR	2" BSP	3 Piece ball
PK809SGSGV-G20C	100 BAR	2-1/2" BSP	3 Piece ball
PK809SGSGV-G24C	69 BAR	3" BSP	3 Piece ball



## LOCKING AVAILABLE

GLK-

Part. no	Pressure	Connection	Description
GLK6-F		DN6 - DN13	Flat type, Carbon steel, 1/4" - 1/2"
GLK6-F-SS		DN6 - DN13	Flat type, Stainless, 1/4" - 1/2"
GLK20-F		DN20 - DN50	Flat type, Carbon steel, 3/4" - 2"
GLK20-F-SS		DN20 - DN50	Flat type, Stainless, 3/4" - 2"
GLK6-U		DN6 - DN13	U type, Carbon steel, 1/4" - 1/2"
GLK20-U		DN20 - DN50	U type, Carbon steel, 3/4" - 2"

## 1-PIECE BALL VALVES - 316

TYPE: V103H SERIES - 800 PSI

Part. no	Pressure	Connection	Description
V103H-NS-008	40 BAR	1/4" NPT	Reduced bore
V103H-NS-010	40 BAR	3/8" NPT	Reduced bore
V103H-NS-015	40 BAR	1/2" NPT	Reduced bore
V103H-NS-020	40 BAR	3/4" NPT	Reduced bore
V103H-NS-025	40 BAR	1" NPT	Reduced bore
V103H-PS-008	40 BAR	1/4" BSPP	Reduced bore
V103H-PS-010	40 BAR	3/8" BSPP	Reduced bore
V103H-PS-015	40 BAR	1/2" BSPP	Reduced bore
V103H-PS-020	40 BAR	3/4" BSPP	Reduced bore
V103H-PS-025	40 BAR	1" BSPP	Reduced bore

## 1-PIECE BALL VALVES - 316

TYPE: V103P SERIES - 800 PSI

Part. no	Pressure	Connection	Description
V103P-PSL-008	40 BAR	1/4" BSPP	Reduced bore, Locking
V103P-PSL-010	40 BAR	3/8" BSPP	Reduced bore, Locking
V103P-PSL-015	40 BAR	1/2" BSPP	Reduced bore, Locking

## 1-PIECE BALL VALVES - 316

TYPE: V010H SERIES - 800 PSI

Part. no	Pressure	Connection	Description
V010H-NS-008	55 BAR	1/4" NPT	Male x Female, Red bore
V010H-NS-015	55 BAR	1/2" NPT	Male x Female, Red bore
V010H-NS-020	55 BAR	3/4" NPT	Male x Female, Red bore



**2-PIECE BALL VALVES - 316**

TYPE: V011 SERIES - 800 PSI

Part. no	Pressure	Connection	Description
V011-NS-008	55 BAR	1/4" NPT	Male x Male, Red bore
V011-NS-010	55 BAR	3/8" NPT	Male x Male, Red bore
V011-NS-015	55 BAR	1/2" NPT	Male x Male, Red bore

**2-PIECE BALL VALVES - 316**

TYPE: V106 SERIES - 1000 PSI

Part. no	Pressure	Connection	Description
V106-NSL-008	69 BAR	1/4" NPT	Full bore, Locking, Pad tapping
V106-NSL-010	69 BAR	3/8" NPT	Full bore, Locking, Pad tapping
V106-NSL-015	69 BAR	1/2" NPT	Full bore, Locking, Pad tapping
V106-NSL-020	69 BAR	3/4" NPT	Full bore, Locking, Pad tapping
V106-NSL-025	69 BAR	1" NPT	Full bore, Locking, Pad tapping
V106-NSL-032	69 BAR	1-1/4" NPT	Full bore, Locking, Pad tapping
V106-NSL-040	69 BAR	1-1/2" NPT	Full bore, Locking, Pad tapping
V106-NSL-050	69 BAR	2" NPT	Full bore, Locking, Pad tapping
V106-NSL-065	55 BAR	2-1/2" NPT	Full bore, Locking, Pad tapping
V106-NSL-080	55 BAR	3" NPT	Full bore, Locking, Pad tapping
V106-PSL-008	69 BAR	1/4" BSPP	Full bore, Locking, Pad tapping
V106-PSL-010	69 BAR	3/8" BSPP	Full bore, Locking, Pad tapping
V106-PSL-015	69 BAR	1/2" BSPP	Full bore, Locking, Pad tapping
V106-PSL-020	69 BAR	3/4" BSPP	Full bore, Locking, Pad tapping
V106-PSL-025	69 BAR	1" BSPP	Full bore, Locking, Pad tapping
V106-PSL-032	69 BAR	1-1/4" BSPP	Full bore, Locking, Pad tapping
V106-PSL-040	69 BAR	1-1/2" BSPP	Full bore, Locking, Pad tapping
V106-PSL-050	69 BAR	2" BSPP	Full bore, Locking, Pad tapping
V106-PSL-065	55 BAR	2-1/2" BSPP	Full bore, Locking, Pad tapping
V106-PSL-080	55 BAR	3" BSPP	Full bore, Locking, Pad tapping

**2-PIECE BALL VALVES - 316**

TYPE: V109 SERIES - 1000 PSI

Part. no	Pressure	Connection	Description
V109-PSL-008	69 BAR	1/4" BSPP	Full bore, Locking, Pad tapping
V109-PSL-010	69 BAR	3/8" BSPP	Full bore, Locking, Pad tapping
V109-PSL-015	69 BAR	1/2" BSPP	Full bore, Locking, Pad tapping
V109-PSL-020	69 BAR	3/4" BSPP	Full bore, Locking, Pad tapping
V109-PSL-025	69 BAR	1" BSPP	Full bore, Locking, Pad tapping
V109-PSL-032	69 BAR	1-1/4" BSPP	Full bore, Locking, Pad tapping
V109-PSL-040	69 BAR	1-1/2" BSPP	Full bore, Locking, Pad tapping
V109-PSL-050	69 BAR	2" BSPP	Full bore, Locking, Pad tapping

LONG TYPE THREADS



## 3-PIECE BALL VALVES - 316

TYPE: V105T SERIES - 800 PSI

V105T-NSL-015	1/2" NPT	63 BAR	Full Bore, Locking device
V105T-NSL-020	3/4" NPT	63 BAR	Full Bore, Locking device
V105T-NSL-025	1" NPT	63 BAR	Full Bore, Locking device
V105T-NSL-032	1-1/4" NPT	63 BAR	Full Bore, Locking device
V105T-NSL-040	1-1/2" NPT	63 BAR	Full Bore, Locking device
V105T-NSL-050	2" NPT	63 BAR	Full Bore, Locking device
V105T-NSL-065	2-1/2" NPT	40 BAR	Full Bore, Locking device
V105T-NSL-080	3" NPT	40 BAR	Full Bore, Locking device
V105T-NSL-100	4" NPT	40 BAR	Full Bore, Locking device
V105T-PSL-015	1/2" BSPP	63 BAR	Full Bore, Locking device
V105T-PSL-020	3/4" BSPP	63 BAR	Full Bore, Locking device
V105T-PSL-025	1" BSPP	63 BAR	Full Bore, Locking device
V105T-PSL-032	1-1/4" BSPP	63 BAR	Full Bore, Locking device
V105T-PSL-040	1-1/2" BSPP	63 BAR	Full Bore, Locking device
V105T-PSL-050	2" BSPP	63 BAR	Full Bore, Locking device
V105T-PSL-065	2-1/2" BSPP	40 BAR	Full Bore, Locking device
V105T-PSL-080	3" BSPP	40 BAR	Full Bore, Locking device
V105T-PSL-100	4" BSPP	40 BAR	Full Bore, Locking device



## D-PRO VALVES - 316

TYPE: V81 SERIES - 1000

Part. no	Pressure	Connection	Description
V81A-D-6M-S	69 BAR	6mm DK-Lok	Twin Ferrule Connections
V81B-D-10M-S	69 BAR	10mm DK-Lok	Twin Ferrule Connections
V81C-D-12M-S	69 BAR	12mm DK-Lok	Twin Ferrule Connections
V81D-D-16M-S	69 BAR	16mm DK-Lok	Twin Ferrule Connections
V81A-D-4T-S	69 BAR	1/4" DK-Lok	Twin Ferrule Connections
V81B-D-6T-S	69 BAR	3/8" DK-Lok	Twin Ferrule Connections
V81C-D-8T-S	69 BAR	1/2" DK-Lok	Twin Ferrule Connections
V81D-D-12T-S	69 BAR	3/4" DK-Lok	Twin Ferrule Connections
V81E-D-16T-S	69 BAR	1" DK-Lok	Twin Ferrule Connections
V81A-F-4N-S	69 BAR	1/4" NPT	1 piece body
V81B-F-6N-S	69 BAR	3/8" NPT	1 piece body
V81C-F-8N-S	69 BAR	1/2" NPT	1 piece body
V81D-F-12N-S	69 BAR	3/4" NPT	1 piece body
V81E-F-16N-S	69 BAR	1" NPT	1 piece body



## 2-PIECE BALL VALVES - 316

TYPE: V208 SERIES - 2000 PSI

Part. no	Pressure	Connection	Description
V208-NSL-008	137 BAR	1/4" NPT	Locking, Pad Tapping
V208-NSL-010	137 BAR	3/8" NPT	Locking, Pad Tapping
V208-NSL-015	137 BAR	1/2" NPT	Locking, Pad Tapping
V208-NSL-020	137 BAR	3/4" NPT	Locking, Pad Tapping
V208-NSL-025	137 BAR	1" NPT	Locking, Pad Tapping
V208-NSL-032	103 BAR	1-1/4" NPT	Locking, Pad Tapping
V208-NSL-040	103 BAR	1-1/2" NPT	Locking, Pad Tapping
V208-NSL-050	103 BAR	2" NPT	Locking, Pad Tapping
V208-PSL-008	137 BAR	1/4" BSPP	Locking, Pad Tapping
V208-PSL-010	137 BAR	3/8" BSPP	Locking, Pad Tapping
V208-PSL-015	137 BAR	1/2" BSPP	Locking, Pad Tapping
V208-PSL-020	137 BAR	3/4" BSPP	Locking, Pad Tapping
V208-PSL-025	137 BAR	1" BSPP	Locking, Pad Tapping
V208-PSL-032	103 BAR	1-1/4" BSPP	Locking, Pad Tapping
V208-PSL-040	103 BAR	1-1/2" BSPP	Locking, Pad Tapping
V208-PSL-050	103 BAR	2" BSPP	Locking, Pad Tapping



## BALL VALVE WITH SPRING RETURN HANDLE - 316

TYPE: 76 SERIES - 2000 PSI

Part. no	Pressure	Connection	Description
76-501-01-NPT	137 BAR	1/4" NPT	Spring return handle
76-502-01-NPT	137 BAR	3/8" NPT	Spring return handle
76-503-01-NPT	137 BAR	1/2" NPT	Spring return handle
76-504-01-NPT	137 BAR	3/4" NPT	Spring return handle
76-505-01-NPT	137 BAR	1" NPT	Spring return handle
76-508-01-NPT	103 BAR	2" NPT	Spring return handle
76-503-P01-BSP	137 BAR	1/2" BSPP	Spring return handle
76-504-P01-BSP	137 BAR	3/4" BSPP	Spring return handle
76-505-P01-BSP	137 BAR	1" BSPP	Spring return handle



## D-PRO VALVES - 316

TYPE: V82 SERIES - 3000 PSI

Part. no	Pressure	Connection	Description
V82A-F-2N-S	206 BAR	1/8" NPT	Panel Nut
V82B-F-4N-S	206 BAR	1/4" NPT	Panel Nut
V82C-F-6N-S	206 BAR	3/8" NPT	Panel Nut
V82D-F-8N-S	206 BAR	1/2" NPT	Panel Nut
V82B-D-6M-S	206 BAR	6mm DK-Lok	Panel Nut, Twin Ferrule
V82B-D-8M-S	206 BAR	8mm DK-Lok	Panel Nut, Twin Ferrule
V82C-D-10M-S	206 BAR	10mm DK-Lok	Panel Nut, Twin Ferrule
V82B-D-12M-S	206 BAR	12mm DK-Lok	Panel Nut, Twin Ferrule
V82A-D-2T-S	206 BAR	1/8" DK-Lok	Panel Nut, Twin Ferrule
V82B-D-4T-S	206 BAR	1/4" DK-Lok	Panel Nut, Twin Ferrule
V82C-D-6T-S	206 BAR	3/8" DK-Lok	Panel Nut, Twin Ferrule
V82D-D-8T-S	206 BAR	1/2" DK-Lok	Panel Nut, Twin Ferrule



## ALCO VALVES - 316

TYPE: PB SERIES - 6000 PSI

Part. no	Pressure	Connection	Description
PB2NS-LM	413 BAR	1/4" NPT	Lever handle
PB3NS-LM	413 BAR	3/8" NPT	Lever handle
PB4NS-LM	413 BAR	1/2" NPT	Lever handle
PB6NS-LM	413 BAR	3/4" NPT	Lever handle
PB8NS-LM	413 BAR	1" NPT	Lever handle
PB2PS-LM	413 BAR	1/4" BSPP	Lever handle
PB3PS-LM	413 BAR	3/8" BSPP	Lever handle
PB4PS-LM	413 BAR	1/2" BSPP	Lever handle
PB6PS-LM	413 BAR	3/4" BSPP	Lever handle
PB8PS-LM	413 BAR	1" BSPP	Lever handle

OPTION: Fire Safe, For Methanol, With Locking, Marine T handle

**D-PRO VALVES - 316**

TYPE: V86 SERIES - 6000 PSI

Part. no	Pressure	Connection	Description
V86A-F-4N-PC-S	413 BAR	1/4" NPT	Bore 10mm
V86A-F-4N-PV-P1	413 BAR	1/4" NPT	Bore 10mm, Panel Nut
V86A-F-6N-PC-S	413 BAR	3/8" NPT	Bore 10mm
V86A-F-6N-PV-P1	413 BAR	3/8" NPT	Bore 10mm, Panel Nut
V86A-F-8N-PC-S	413 BAR	1/2" NPT	Bore 10mm
V86A-F-8N-PV-P1	413 BAR	1/2" NPT	Bore 10mm, Panel Nut
V86A-MF-8N-PC-S	413 BAR	1/2" NPT	Bore 10mm, Male x Female
V86B-F-12N-PC-S	345 BAR	3/4" NPT	Bore 12,7mm, 5000 PSI
V86C-F-12N-PK-S	413 BAR	3/4" NPT	Bore 19mm
V86C-F-16N-PK-S	413 BAR	1" NPT	Bore 19mm
V86A-D-6M-PC-S	413 BAR	6mm DK-Lok	Bore 10mm, Twin Ferrule
V86A-D-6M-PC-P1	413 BAR	6mm DK-Lok	Bore 10mm, Twin Ferrule, Panel Nut
V86A-D-10M-PC-S	413 BAR	10mm DK-Lok	Bore 10mm, Twin Ferrule
V86A-D-12M-PC-S	413 BAR	12mm DK-Lok	Bore 10mm, Twin Ferrule
V86A-D-12M-PC-P1	413 BAR	12mm DK-Lok	Bore 10mm, Twin Ferrule, Panel Nut
V86A-D-4T-PC-S	413 BAR	1/4" DK-Lok	Bore 10mm, Twin Ferrule
V86A-D-4T-PC-P1	413 BAR	1/4" DK-Lok	Bore 10mm, Twin Ferrule, Panel Nut
V86A-D-6T-PC-S	413 BAR	3/8" DK-Lok	Bore 10mm, Twin Ferrule
V86A-D-8T-PC-S	413 BAR	1/2" DK-Lok	Bore 10mm, Twin Ferrule
V86A-D-8T-PC-P1	413 BAR	1/2" DK-Lok	Bore 10mm, Twin Ferrule, Panel Nut
V86C-D-16T-PC-S	345 BAR	1" DK-Lok	Bore 19mm, Twin Ferrule

**D-PRO VALVES - 316**

TYPE: VH86 SERIES - 6000 PSI

Part. no	Pressure	Connection	Description
VH86B-F-4N-S	413 BAR	1/4" NPT	Panel Nut
VH86B-MF-4N-S	413 BAR	1/4" NPT	Panel Nut, Male x Female
VH86C-F-6N-S	413 BAR	3/8" NPT	Panel Nut
VH86C-F-8N-S	413 BAR	1/2" NPT	Panel Nut
VH86B-F-4G-S	413 BAR	1/4" BSPP	Panel Nut
VH86C-F-6G-S	413 BAR	3/8" BSPP	Panel Nut
VH86C-F-8G-S	413 BAR	1/2" BSPP	Panel Nut
VH86B-D-6M-S	413 BAR	6mm DK-Lok	Panel Nut, Twin Ferrule
VH86B-D-10M-S	413 BAR	10mm DK-Lok	Panel Nut, Twin Ferrule
VH86C-D-12M-S	413 BAR	12mm DK-Lok	Panel Nut, Twin Ferrule
VH86B-D-4T-S	413 BAR	1/4" DK-Lok	Panel Nut, Twin Ferrule
VH86B-D-6T-S	413 BAR	3/8" DK-Lok	Panel Nut, Twin Ferrule
VH86C-D-8T-S	413 BAR	1/2" DK-Lok	Panel Nut, Twin Ferrule



## BALL VALVES - PEKOS

TYPE: PK806 - 3 PIECE BALL VALVE - 316

Part. no	Pressure	Connection	Description
PK806-SGSGV-G2S	140 BAR	1/4" BSP	3 Piece ball
PK806-SGSGV-G4S	140 BAR	1/2" BSP	3 Piece ball
PK806-SGSGV-G6S	140 BAR	3/4" BSP	3 Piece ball
PK806-SGSGV-G8S	140 BAR	1" BSP	3 Piece ball
PK806-SGSGV-G10S	140 BAR	1-1/4" BSP	3 Piece ball
PK806-SGSGV-G12S	140 BAR	1-1/2" BSP	3 Piece ball
PK806-SGSGV-G16S	100 BAR	2" BSP	3 Piece ball
PK806-SGSGV-G20S	100 BAR	2-1/2" BSP	3 Piece ball
PK806-SGSGV-G24S	69 BAR	3" BSP	3 Piece ball
PK806-SGSGV-N2S	140 BAR	1/4" NPT	3 Piece ball
PK806-SGSGV-N4S	140 BAR	1/2" NPT	3 Piece ball
PK806-SGSGV-N6S	140 BAR	3/4" NPT	3 Piece ball
PK806-SGSGV-N8S	140 BAR	1" NPT	3 Piece ball
PK806-SGSGV-N10S	140 BAR	1-1/4" NPT	3 Piece ball
PK806-SGSGV-N12S	140 BAR	1-1/2" NPT	3 Piece ball
PK806-SGSGV-N16S	100 BAR	2" NPT	3 Piece ball
PK806-SGSGV-N20S	100 BAR	2-1/2" NPT	3 Piece ball
PK806-SGSGV-N24S	69 BAR	3" NPT	3 Piece ball



## GEM VALVES - 316

TYPE: GN SERIES - 6000 PSI

Part. no	Pressure	Connection	Description
GN-N2S	413 BAR	1/4" NPT	Full Bore, ISO topp
GN-N3S	413 BAR	3/8" NPT	Full Bore, ISO topp
GN-N4S	413 BAR	1/2" NPT	Full Bore, ISO topp
GN-N6S	413 BAR	3/4" NPT	Full Bore, ISO topp
GN-N8S	413 BAR	1" NPT	Full Bore, ISO topp
GN-N10S	413 BAR	1-1/4" NPT	Full Bore, ISO topp
GN-N12S	413 BAR	1-1/2" NPT	Full Bore, ISO topp
GN-N16S	413 BAR	2" NPT	Full Bore, ISO topp
GN-G2S	413 BAR	1/4" BSPP	Full Bore, ISO topp
GN-G3S	413 BAR	3/8" BSPP	Full Bore, ISO topp
GN-G4S	413 BAR	1/2" BSPP	Full Bore, ISO topp
GN-G6S	413 BAR	3/4" BSPP	Full Bore, ISO topp
GN-G8S	413 BAR	1" BSPP	Full Bore, ISO topp
GN-G10S	413 BAR	1-1/4" BSPP	Full Bore, ISO topp
GN-G12S	413 BAR	1-1/2" BSPP	Full Bore, ISO topp
GN-G16S	413 BAR	2" BSPP	Full Bore, ISO topp

**GEM VALVES - 316**

TYPE: GM SERIES - HYDRAULIC

HYDRAULIC

Part. no	Pressure	Connection	Description
GM-N2S	500 BAR	1/4" NPT	Full bore, POM seat
GM-N3S	500 BAR	3/8" NPT	Full bore, POM seat
GM-N4S	500 BAR	1/2" NPT	Full bore, POM seat
GM-N6S	400 BAR	3/4" NPT	Full bore, POM seat
GM-N8S	350 BAR	1" NPT	Full bore, POM seat
GM-N10S	350 BAR	1-1/4" NPT	Full bore, POM seat
GM-N12S	350 BAR	1-1/2" NPT	Full bore, POM seat
GM-N16S	350 BAR	2" NPT	Full bore, POM seat
GM-G2S	500 BAR	1/4" BSPP	Full bore, POM seat
GM-G3S	500 BAR	3/8" BSPP	Full bore, POM seat
GM-G4S	500 BAR	1/2" BSPP	Full bore, POM seat
GM-G6S	400 BAR	3/4" BSPP	Full bore, POM seat
GM-G8S	350 BAR	1" BSPP	Full bore, POM seat
GM-G10S	350 BAR	1-1/4" BSPP	Full bore, POM seat
GM-G12S	350 BAR	1-1/2" BSPP	Full bore, POM seat
GM-G16S	350 BAR	2" BSPP	Full bore, POM seat

**GEM VALVES - 316**

TYPE: GE2 SERIES - HYDRAULIC

Part. no	Pressure	Connection	Description
GE2-G1S	500 BAR	1/8" BSPP	Full bore, POM seat
GE2-G2S	500 BAR	1/4" BSPP	Full bore, POM seat
GE2-G3S	500 BAR	3/8" BSPP	Full bore, POM seat
GE2-G4S	500 BAR	1/2" BSPP	Full bore, POM seat
GE2-G6S	400 BAR	3/4" BSPP	Full bore, POM seat
GE2-G8S	350 BAR	1" BSPP	Full bore, POM seat
GE2-N1S	500 BAR	1/8" NPT	Full bore, POM seat
GE2-N2S	500 BAR	1/4" NPT	Full bore, POM seat
GE2-N3S	500 BAR	3/8" NPT	Full bore, POM seat
GE2-N4S	500 BAR	1/2" NPT	Full bore, POM seat
GE2-N6S	400 BAR	3/4" NPT	Full bore, POM seat
GE2-N8S	350 BAR	1" NPT	Full bore, POM seat



## GEM VALVES WITH MOUNTING HOLES - 316

TYPE: GE2-MH - 316 - HYDRAULIC

Part. no	Pressure	Connection	Description
GE2MH-G1S	500 BAR	1/8" BSPP	Bore 4mm
GE2MH-G2S	500 BAR	1/4" BSPP	Bore 6mm
GE2MH-G3S	500 BAR	3/8" BSPP	Bore 10mm
GE2MH-G4S	500 BAR	1/2" BSPP	Bore 13mm
GE2MH-G6S	400 BAR	3/4" BSPP	Bore 20mm
GE2MH-G8S	350 BAR	1" BSPP	Bore 25mm
GE2MH-G10S	350 BAR	1-1/4" BSPP	Bore 25mm
GE2MH-G12S	350 BAR	1-1/2" BSPP	Bore 25mm
GE2MH-N1S	500 BAR	1/8" NPT	Bore 4mm
GE2MH-N2S	500 BAR	1/4" NPT	Bore 6mm
GE2MH-N3S	500 BAR	3/8" NPT	Bore 10mm
GE2MH-N4S	500 BAR	1/2" NPT	Bore 13mm
GE2MH-N6S	400 BAR	3/4" NPT	Bore 20mm
GE2MH-N8S	350 BAR	1" NPT	Bore 25mm
GE2MH-N10S	350 BAR	1-1/4" NPT	Bore 25mm
GE2MH-N12S	350 BAR	1-1/2" NPT	Bore 25mm



## GEM VALVES WITH ISO TOP - 316

TYPE: GE2-FX - 316 - HYDRAULIC

Part. no	Pressure	Connection	Description
GE2FX-G1S	500 BAR	1/8" BSPP	Bore 4mm
GE2FX-G2S	500 BAR	1/4" BSPP	Bore 6mm
GE2FX-G3S	500 BAR	3/8" BSPP	Bore 10mm
GE2FX-G4S	500 BAR	1/2" BSPP	Bore 13mm
GE2FX-G6S	400 BAR	3/4" BSPP	Bore 20mm
GE2FX-G8S	350 BAR	1" BSPP	Bore 25mm
GE2FX-G10S	350 BAR	1-1/4" BSPP	Bore 25mm
GE2FX-G12S	350 BAR	1-1/2" BSPP	Bore 25mm
GE2FX-N1S	500 BAR	1/8" NPT	Bore 4mm
GE2FX-N2S	500 BAR	1/4" NPT	Bore 6mm
GE2FX-N3S	500 BAR	3/8" NPT	Bore 10mm
GE2FX-N4S	500 BAR	1/2" NPT	Bore 13mm
GE2FX-N6S	400 BAR	3/4" NPT	Bore 20mm
GE2FX-N8S	350 BAR	1" NPT	Bore 25mm
GE2FX-N10S	350 BAR	1-1/4" NPT	Bore 25mm
GE2FX-N12S	350 BAR	1-1/2" NPT	Bore 25mm



**ALCO VALVES - 316**

TYPE: UE SERIES - 10 000 PSI

Part. no	Pressure	Connection	Description
UE2NS-LM	690 BAR	1/4" NPT	
UE3NS-LM	690 BAR	3/8" NPT	
UE4NS-LM	690 BAR	1/2" NPT	
UE6NS-LM	690 BAR	3/4" NPT	
UE8NS-LM	690 BAR	1" NPT	

**ALCO VALVES - 316**

TYPE: UB SERIES - 10 000 PSI

Part. no	Pressure	Connection	Description
UB2PS-LM	690 BAR	1/4" BSPP	Panel Mounting holes
UB3PS-LM	690 BAR	3/8" BSPP	Panel Mounting holes
UB4PS-LM	690 BAR	1/2" BSPP	Panel Mounting holes
UB6PS-LM	690 BAR	3/4" BSPP	Panel Mounting holes
UB8PS-LM	690 BAR	1" BSPP	Panel Mounting holes
UB2PS-AC	690 BAR	7/16-20 UN	AE threads for 1/4" OD Tube
UB3PS-AC	690 BAR	9/16-18 UN	AE threads for 3/8" OD Tube

**D-PRO VALVES - 316**

TYPE V86 SERIES - 10 000 PSI

Part. no	Pressure	Connection	Description
V86A-M-4N-PK-S	690 BAR	1/4" NPT	10K, Male x Male
V86A-M-8N-PK-S	690 BAR	1/2" NPT	10K, Male x Male
V86A-F-8N-PK-S	690 BAR	1/2" NPT	10K, Fem x Fem
V86A-F-8N-PK-P1-S	690 BAR	1/2" NPT	10K, Fem x Fem, Panel Nut

**HIP FLOATING BALL VALVE, 316**

TYPE: 16 SERIES

Part. no	Pressure	Connection	Description
10-16NFA	10 000 PSI	1/8" NPT	Orifice 6,35mm, Mounting holes
10-16NFB	10 000 PSI	1/4" NPT	Orifice 6,35mm, Mounting holes
10-16NFC	10 000 PSI	3/8" NPT	Orifice 6,35mm, Mounting holes
10-16NFD	10 000 PSI	1/2" NPT	Orifice 6,35mm, Mounting holes
20-16LF4	20 000 PSI	1/4" MP	Orifice 2,77mm, Monting holes
20-16LF6	20 000 PSI	3/8" MP	Orifice 5,15mm, Monting holes
20-16LF9	20 000 PSI	9/16" MP	Orifice 6,35mm, Monting holes

OPTION: Taper Seal &amp; High Pressure Connection



## HIP TRUNION BALL VALVE, 316

TYPE: 71, 74 & 80 SERIES

Part. no	Pressure	Connection	Description
15-71NFA	15 000 PSI	1/8" NPT	Orifice 4,75mm, Mounting holes & nut
15-71NFB	15 000 PSI	1/4" NPT	Orifice 4,75mm, Mounting holes & nut
15-74NFB	15 000 PSI	1/4" NPT	Orifice 6,35mm, Mounting holes & nut
15-71NFC	15 000 PSI	3/8" NPT	Orifice 4,75mm, Mounting holes & nut
15-74NFC	15 000 PSI	3/8" NPT	Orifice 9,53mm, Mounting holes & nut
15-74NFD	15 000 PSI	1/2" NPT	Orifice 9,53mm, Mounting holes & nut
10-80NFF	10 000 PSI	3/4" NPT	Orifice 12,7mm, Mounting holes
10-80NFH	10 000 PSI	1" NPT	Orifice 12,7mm, Mounting holes
20-71LF4	20 000 PSI	1/4" MP	Orifice 2,77mm, Mounting holes & nut
20-71LF6	20 000 PSI	3/8" MP	Orifice 4,75mm, Mounting holes & nut
20-71LF9	20 000 PSI	9/16" MP	Orifice 4,75mm, Mounting holes & nut
15-74LF9	15 000 PSI	9/16" MP	Orifice 7,92mm, Mounting holes & nut
15-74LF12	15 000 PSI	3/4" MP	Orifice 9,53mm, Mounting holes & nut
10-80LF12	10 000 PSI	3/4" MP	Orifice 12,7mm, Mounting holes
15-74LF16	15 000 PSI	1" MP	Orifice 9,53mm, Mounting holes & nut
10-80LF16	10 000 PSI	1" MP	Orifice 12,7mm, Mounting holes